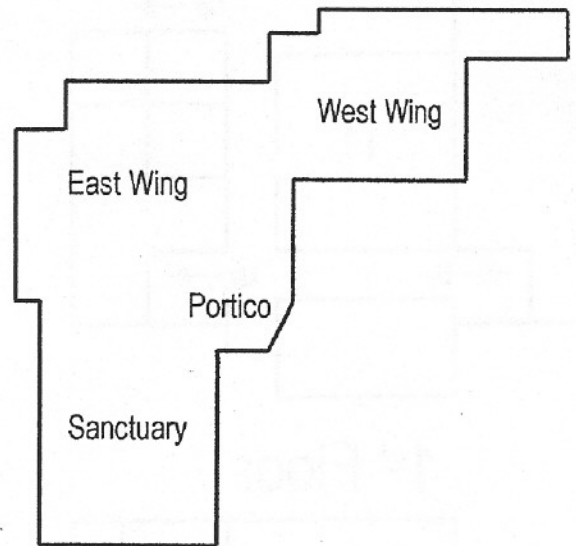
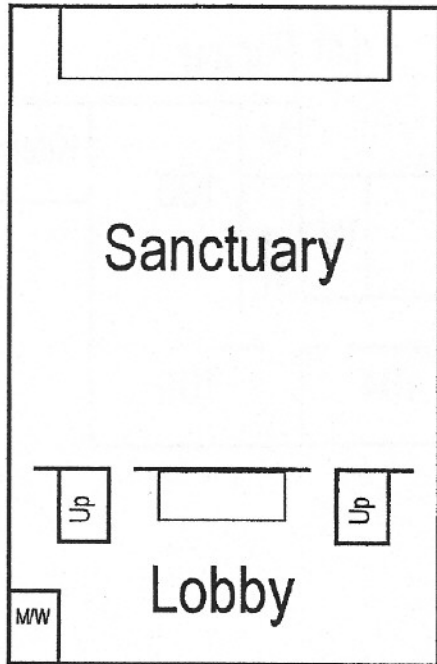
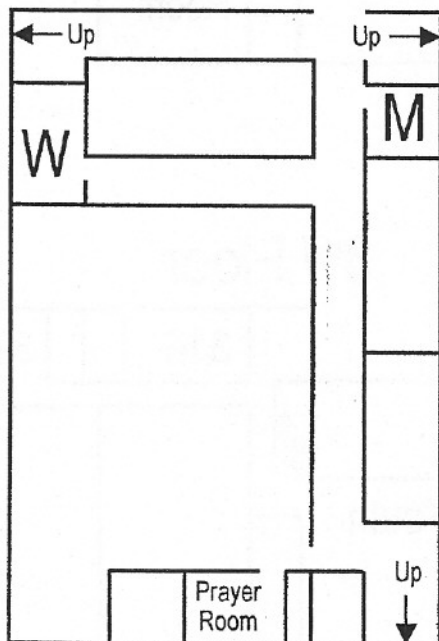


Calvary Memorial Church

CAMPUS MAP



Basement



Sanctuary

Basement: Prayer Room, Custodial, OPCA Office
 First Floor: Traditional and Contemporary Worship

Portico

Legacy Room
 Resource Counters

East Wing

Basement: Children's Choirs, Grade 4
 First Floor: Nurseries, 2s, 3s
 Second Floor: 4s, Kindergarten, Grades 1-3

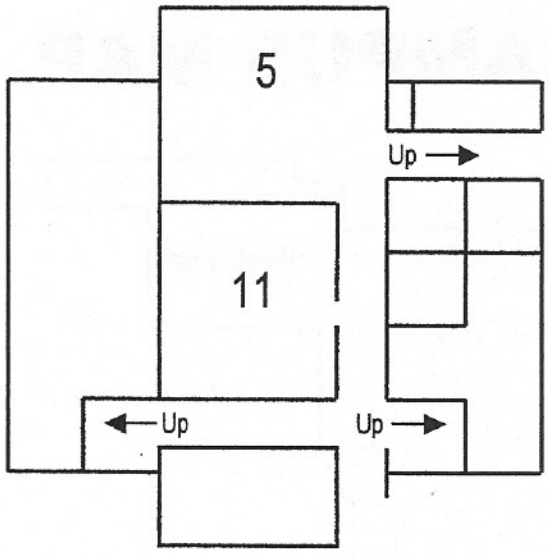
West Wing

First Floor: Adult Bible Fellowships, Kitchen
 Second Floor: Upper Room, Adult Bible Fellowships
 Third Floor: Youth, Grades 5-6

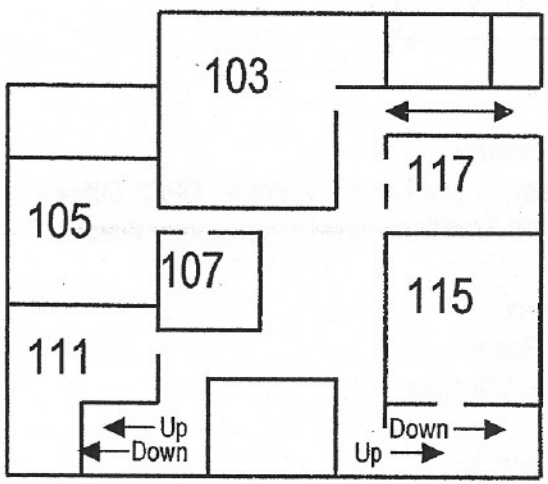
Restrooms are located in the Sanctuary lobby, basement, second floor of East Wing, first floor of West Wing, and second floor of West Wing. Look for the M or W symbols.

East Wing

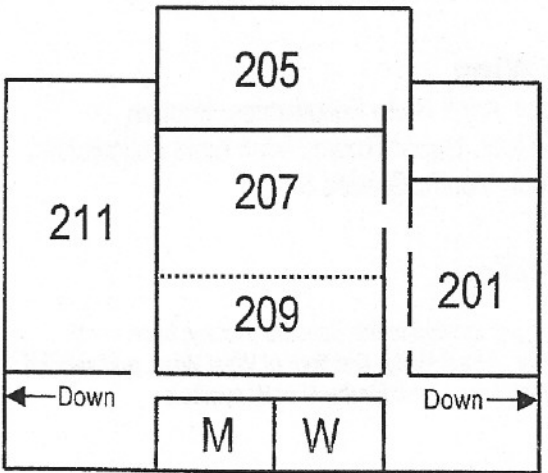
Basement



1st Floor

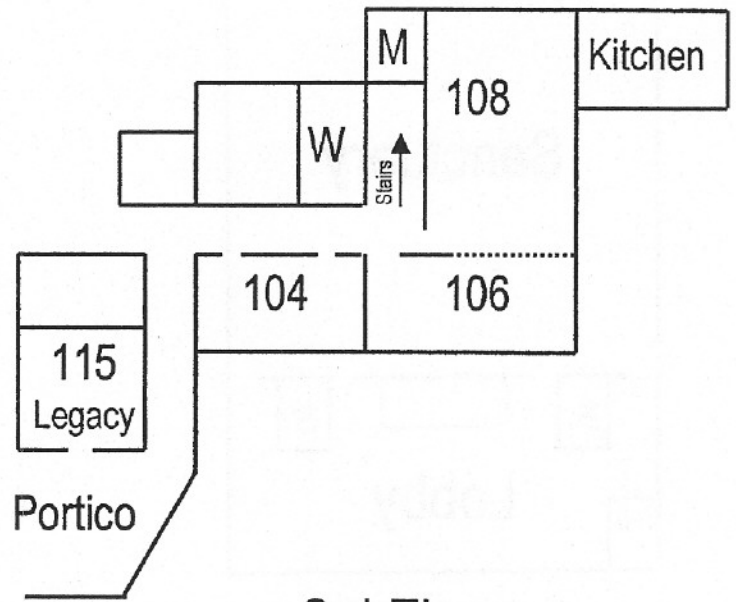


2nd Floor

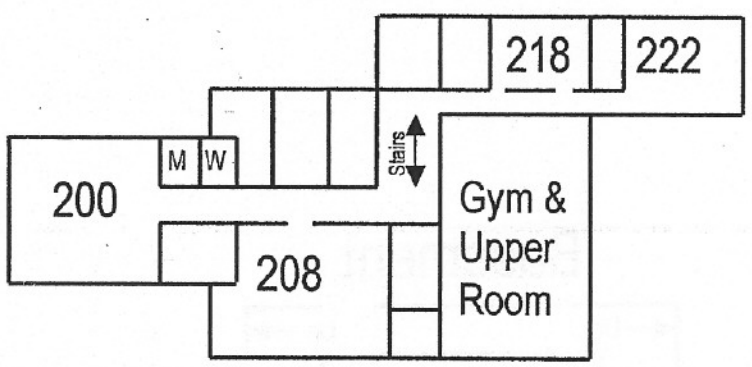


West Wing

1st Floor



2nd Floor



3rd Floor

